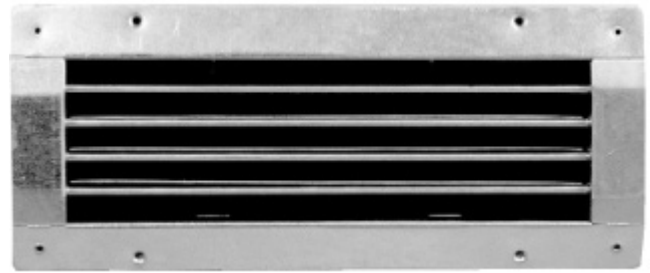


# Serie G-100-R



Lüftungsgitter einreihig mit verstellbaren horizontalen Lamellen für Rohreinbau. Gitter und Anbauteile aus verzinktem Stahlblech mit Senkbohrungen für Schraubenmontage.



Optional:

- Lackierung in RAL- und NCS-Farben auf Anfrage.
- Masse und Ausführungen nach Vorgabe.

H\B	200	300	400	500	600	800	1000
50	S	S	S	S	S	S	S
100	S	S	S	S	S	S	S
150	S	S	S	S	S	S	S
200	S	S	S	S	S	S	S

S= Standard (Alle Sondergrößen möglich, Preis auf Anfrage)







Alle Angaben in mm

Gitter Höhe	50	Idealer Bereich																						
	100											Idealer Bereich												
150											Idealer Bereich													
200											Idealer Bereich													
Durchmesser	125	140	160	180	224	250	280	315	355	400	450	500	560	630	710	800	900	1000	1120	1250	1400	1600	1800	2000

■ Idealer Bereich

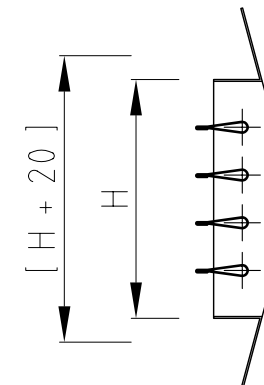
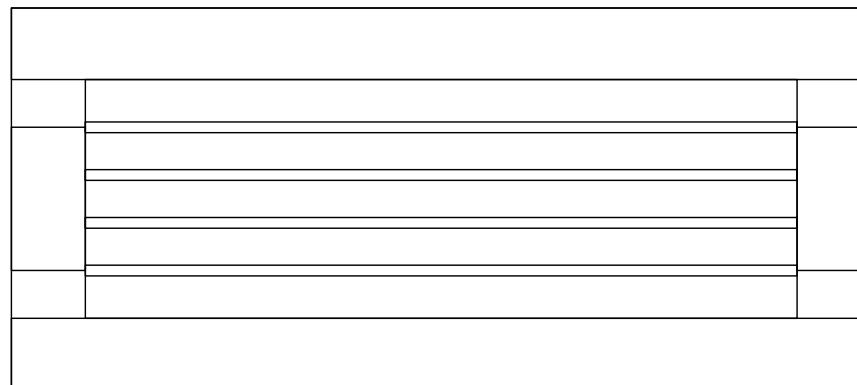
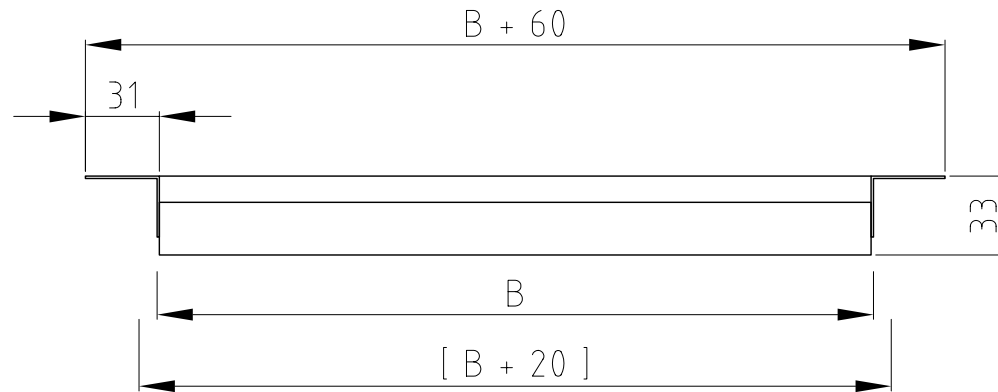
Alle Angaben in mm

## Ausführungen:

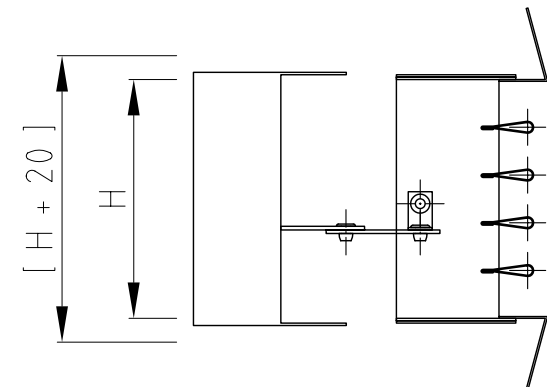
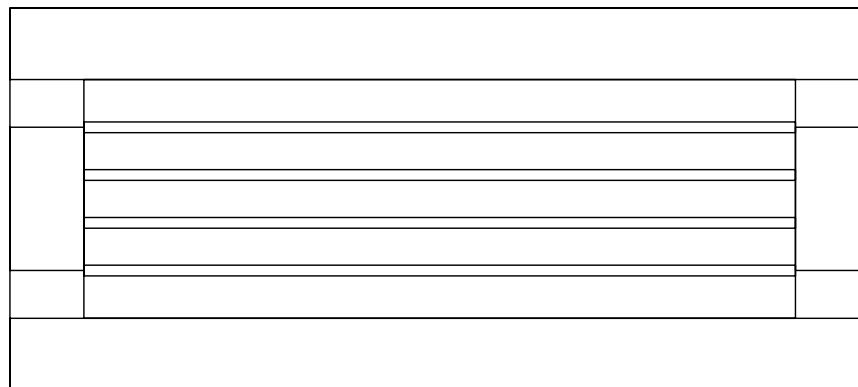
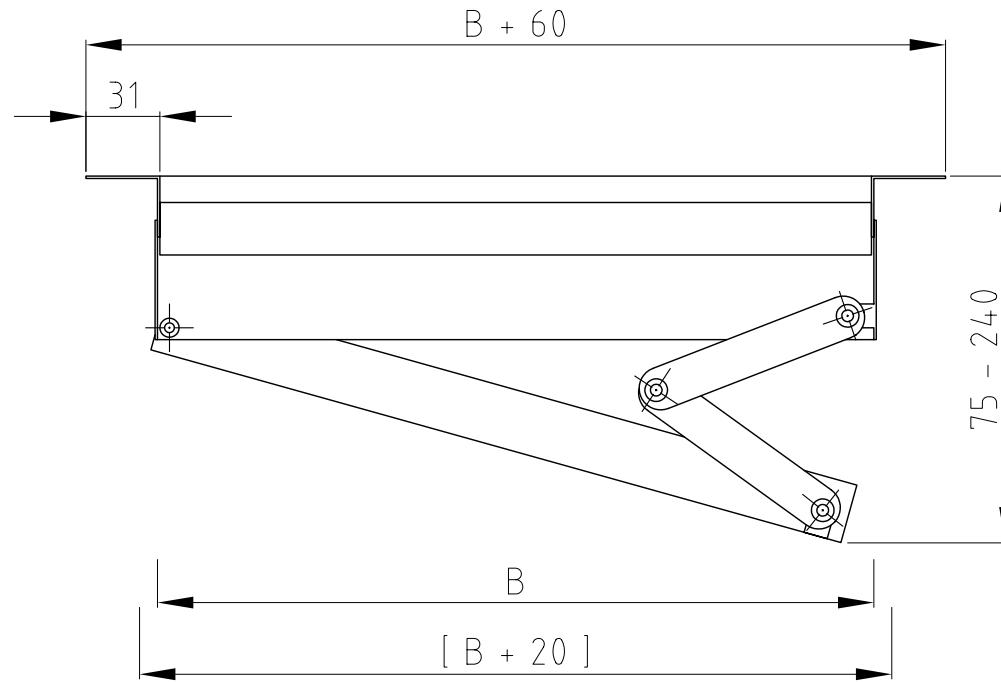
-  **G-100-R** ohne Anbauteile
-  **G-110-R** mit einstellbarer Schöpfzunge
-  **G-120-R** mit einstellbaren Schöpflamellen
-  **G-130-R** mit gegenläufiger Mengenregulierung
-  **G-140-R** mit einstellbarem Schlitzschieber
-  **G-150-R** mit schrägem einstellbarem Schlitzschieber

Rücknahme oder Umtausch nicht möglich!

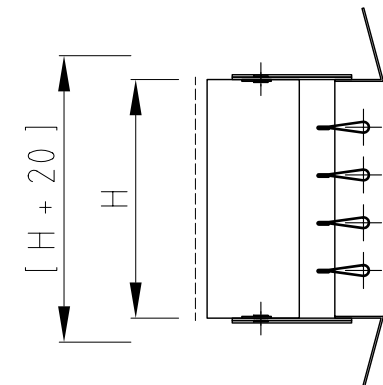
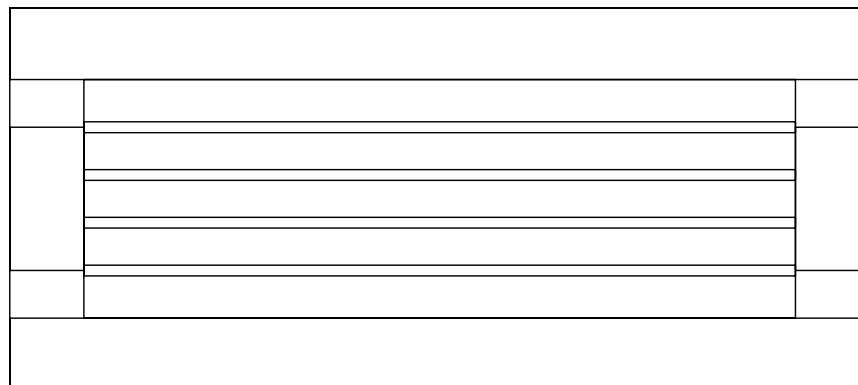
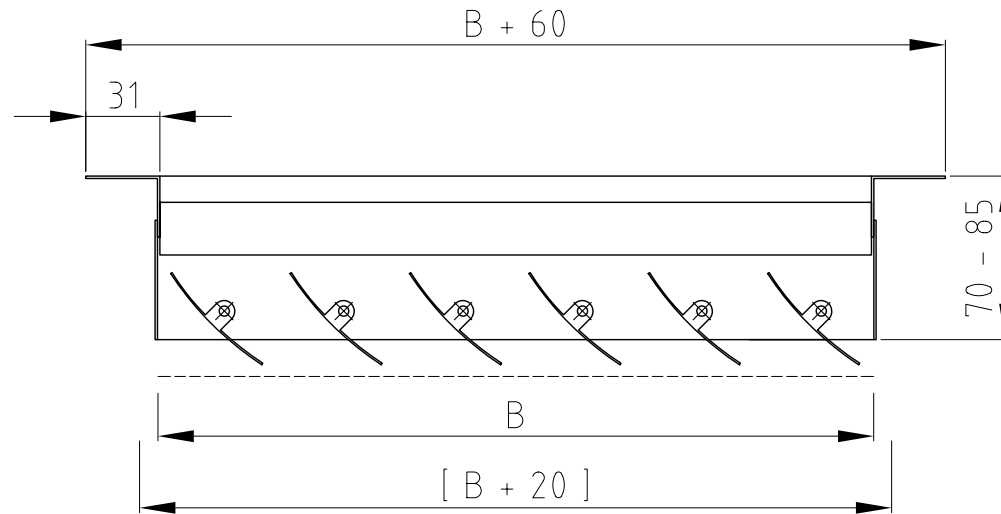
# Lüftungsgitter Serie G-100 R



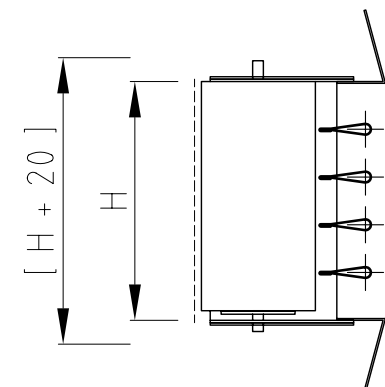
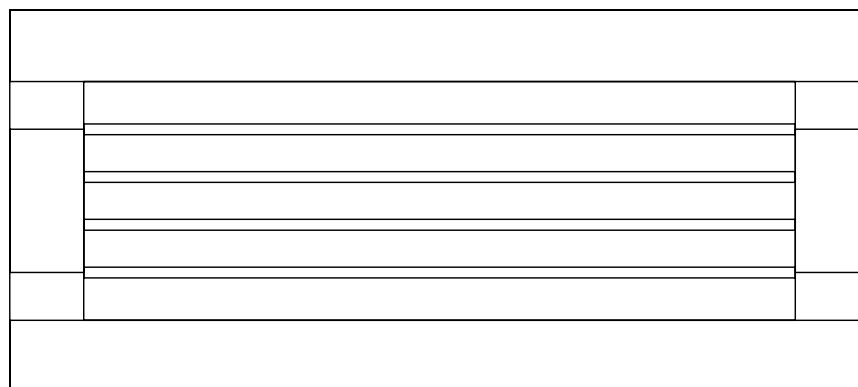
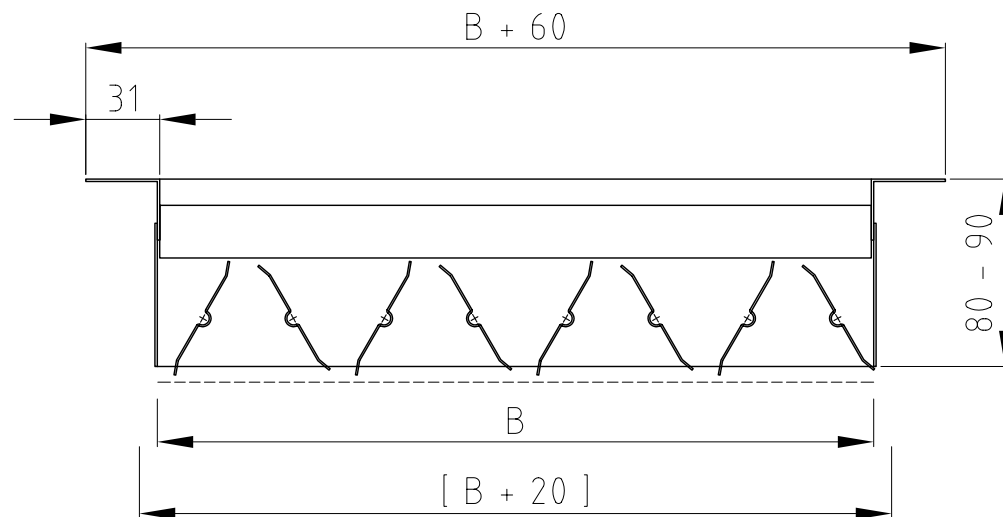
# Lüftungsgitter Serie G-110 R



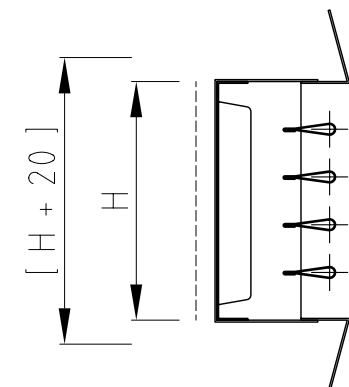
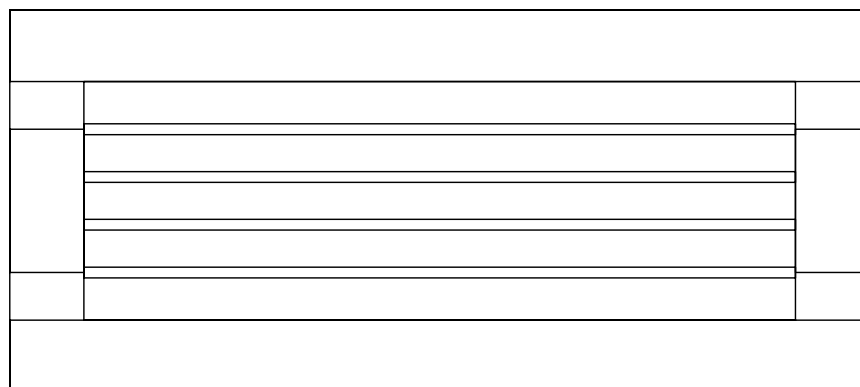
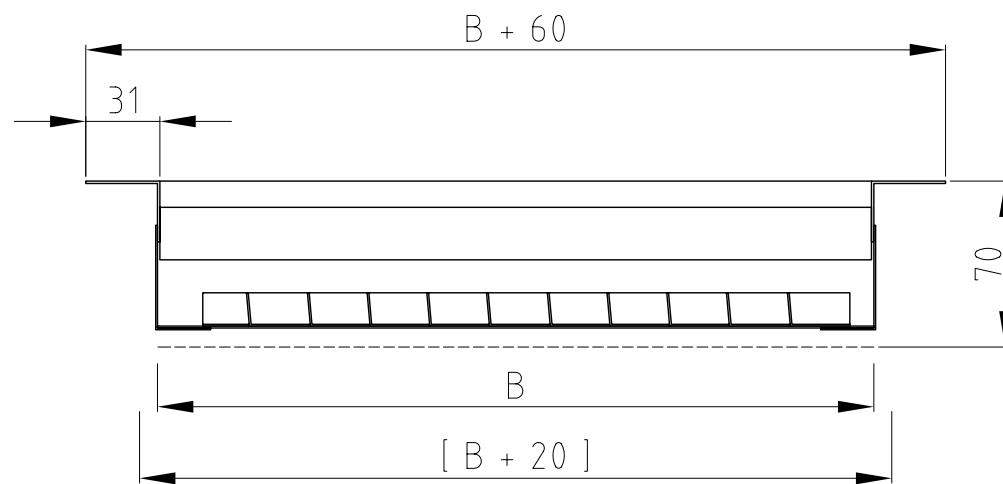
# Lüftungsgitter Serie G-120 R



# Lüftungsgitter Serie G-130 R



# Lüftungsgitter Serie G-140 R



# Lüftungsgitter Serie G-150 R

